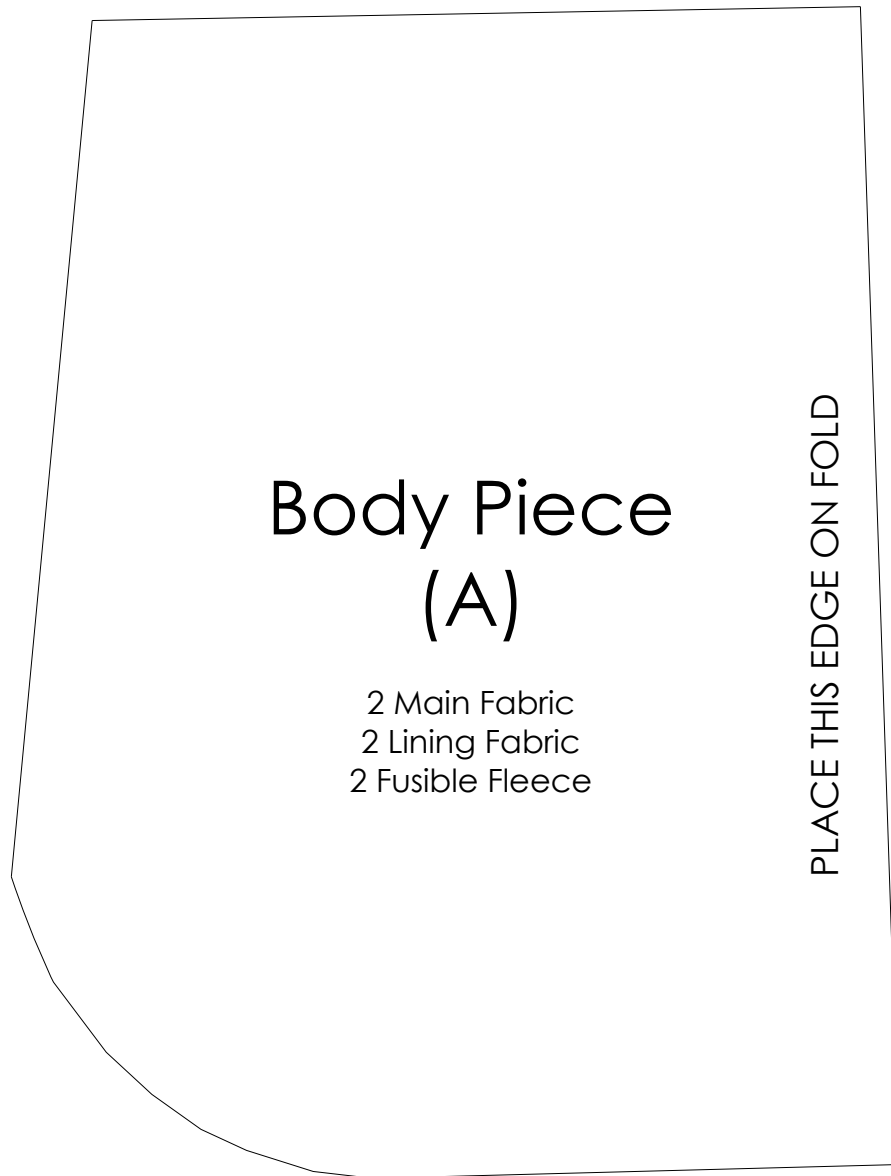
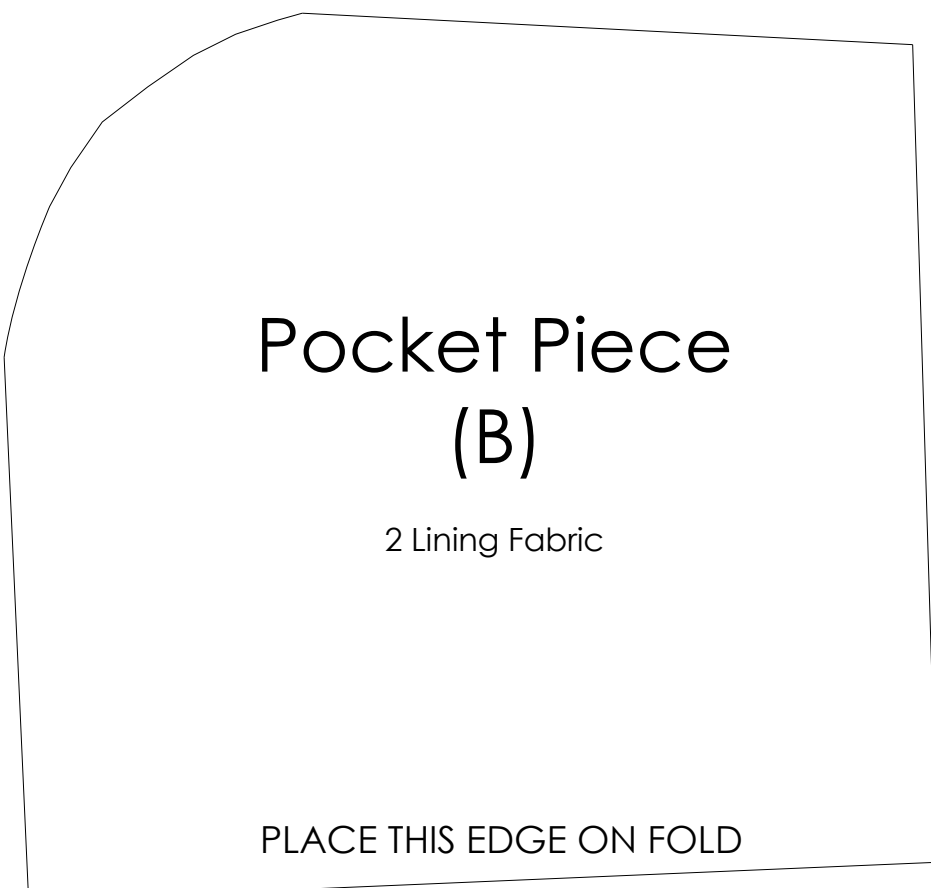


Wristlet Clutch Sewing Pattern

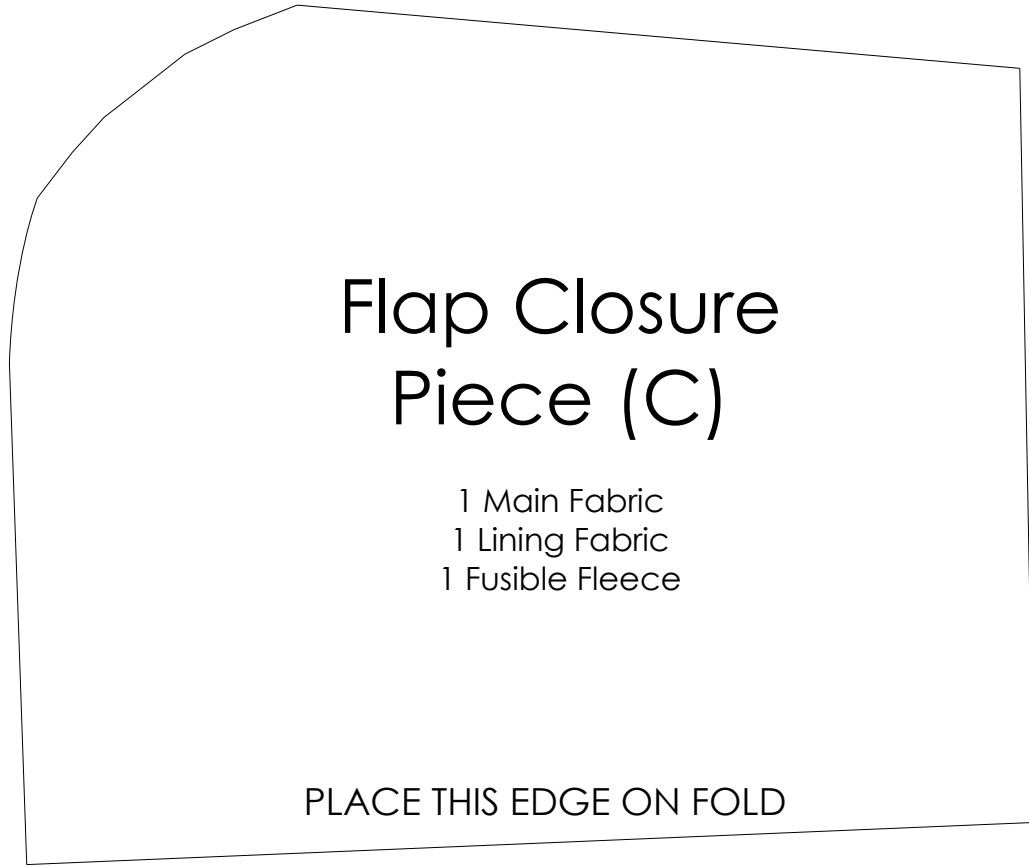


A pattern for a pocket piece. It is a roughly rectangular shape with a rounded top-left corner. The text is centered within the shape.

Pocket Piece (B)

2 Lining Fabric

PLACE THIS EDGE ON FOLD

A pattern for a flap closure piece. It is a roughly rectangular shape with a rounded top-left corner, similar to the pocket piece pattern. The text is centered within the shape.

Flap Closure Piece (C)

1 Main Fabric
1 Lining Fabric
1 Fusible Fleece

PLACE THIS EDGE ON FOLD